

ZION'S FAITH AT HOME MINISTRIES
NEWSLETTER

theParentLinkSM

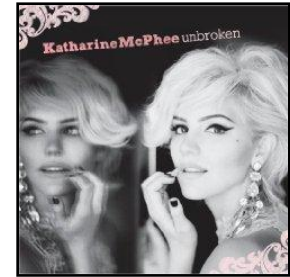
January 2010



**Welcome to the
online MEDIA pages
of Zion's parent
newsletter!**

On the following pages you will find media information for teens and children. The first page applies more to children. The second page is geared more for teens.

You will also find plenty of discussion questions to spark conversations in your home.



New Music!

Your feedback is important to us!! Please feel free to contact any member of Zion's CYFM staff with your comments. Let us know what you think!!

Danielle Acay

dacay.zionkent@comcast.net

Kelly Mullin

kmullin.zionkent@comcast.net

Berit Wright

Bwright.zionkent@comcast.net

These pages are designed to help educate parents and aren't meant to endorse any movie, music, or product.

Our prayer is that you'll make informed decisions about what your children listen to and watch.

What's Playing at the Movies

Movie: *The Tooth Fairy* (Jan. 22)

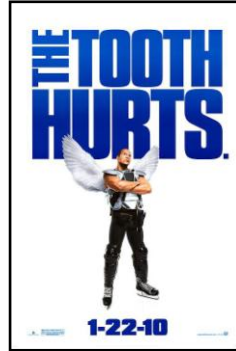
Genre: Family comedy

Rating: PG

Cast: Dwayne Johnson, Ashley Judd, Julie Andrews

Synopsis: A tough minor-league hockey player with a reputation for doing facial damage to opponents gets busted for some insensitive comments to a child. His lousy attitude earns him a sentence working for a week as a real-life tooth fairy. After getting used to his new role, he starts to rediscover some of his own long-lost dreams.

Discussion Questions: What type of attitude do you usually have? Think of a time you've hurt someone with your words: Were you able to undo the damage? If so, how? Read aloud Matthew 18:4. What does it mean to have a childlike faith?



What Music Is Releasing

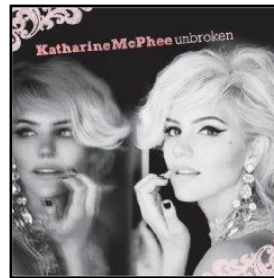
Artist: Katharine McPhee

Album: *Unbroken*

Artist Info: This 25-year-old pop singer was the runner-up on *American Idol* season five. Her self-titled debut album reached number two on the Billboard top 200 chart. McPhee has been upfront about her struggle with bulimia.

Summary: McPhee's sophomore album highlights her versatile, elegant vocal style. Several songs deal with broken relationships. In the first single, "Had It All," McPhee sings, "Why did I believe that little voice that led me down the path to this bad choice? Why don't I listen to the angels when they sing?"

Discussion Questions: How aware are you each day of your conscience? How much do you rely on it to help you choose between right and wrong? Read aloud 1 Kings 19:11-13. How and when does God speak to you? When are you most likely to listen to him?



What Games Are Out

Title	Content	Rating & Platform
<i>Ultimate I Spy</i>	Players navigate 3D screens to solve riddles and complete puzzles.	E; Wii
<i>Professor Layton and the Diabolical Box</i>	In this adventure game, players can work on more than 150 logic puzzles. Clues help players solve a mystery.	E10+; Nintendo DS
<i>James Cameron's Avatar: The Game</i>	This shoot-'em-up fantasy game offers a prequel version of the hit movie, introducing the alien moon Pandora. Contains non-blood combat violence.	T; PSP

GAME RATINGS KEY: EC=Early Childhood, E=Everyone (ages 6+), E10+ (ages 10+), T=Teen (ages 13+)



Culture & Trends

What's happening right now that may affect your children and family:

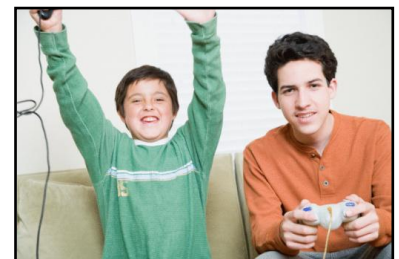
- "Helicopter parents" who are overinvolved with their children's lives face a growing backlash. Kids grow best when parents let go, experts say.
- The recession is slowing such "hyperparenting." One-third of parents say they've had to cut their children's extracurricular activities—and most families admit they like the results.

(CBS News Poll)

Quick Stats

- An estimated 13% of U.S. children walk or bike to school these days, compared to more than 50% of children 40 years ago.
- A study shows that children burn about three times more calories playing some exercise-oriented video games than they do just sitting on the couch watching television.

(*Science Daily*)
(*USA Today*)



MUSICSPOTLIGHT



Mainstream Artist

Background: Dashboard is mainly just singer-songwriter Chris Carrabba, who's been making alternative and acoustic albums with and without a backing band for the past decade.

Albums: *Alter the Ending* (2009), *The Places You Have Come to Fear the Most* (2001), *The Swiss Army Romance* (2000)

What Parents Should Know: Carrabba is a Christian, though his lyrics don't address his faith much. Most of his songs are about relationship ups and downs. Carrabba's songs are deeply personal and emotional, so they easily strike a chord with teenagers facing their own relationship troubles.

What Dashboard Confessional Says: "You should never ever talk to kids like they're kids. You talk to them like people. You think they don't know what's going on? ... At least kids get the fact that they don't understand it yet."

Discussion Questions: Do most people take you seriously? Why or why not? What are examples of things that should and shouldn't have age limits? Read aloud 1 Timothy 4:12. How can you set an example "in speech, in life, in love, in faith, in purity"? When you do that, how do expect people will treat you, and why?



Christian Artist

Background: Singer-songwriter Wickham started leading worship in his youth group at age 12. Now 25, he has already released five albums to critical acclaim. Wickham has toured extensively and visits churches across the globe to share his music.

Albums: *Heaven and Earth* (2009), *Cannons* (2007), *Give You My World* (2003)

What Parents Should Know: Though Wickham isn't a "heavy-hitter" in the worship genre, he's making a name for himself with heartfelt albums and thoughtful lyrics. He's deeply passionate about leading people as they worship God.

What Wickham Says: Sitting in a chapel service in junior high, Wickham "realized for the first time that [being] Christian wasn't about following these rules that my parents or the Bible said. It wasn't about...reading a chapter a day or going to church. It was about loving Jesus with your life and knowing him."

Discussion Questions: When does being a Christian seem centered around rules? What is following Jesus really about? Read aloud Psalm 92:1-4. Why is it important to spend time with God every day? Does that come easily to you? Why or why not? What else makes you feel close to God?

FILMWATCH

Movie: *To Save a Life* (releases Jan. 22)

Genre: Drama

Rating: PG-13 (for mature thematic elements involving teen suicide, teen drinking, some drug content, disturbing images and sexuality)

Synopsis: When childhood friends Jake and Roger drift apart in high school, Roger can't take the loneliness and pain, so he kills himself. Jake, wracked with guilt, searches for redemption and answers, even as his world spins out of control. In a youth group, he finds help and a new set of friends.

Discussion Questions: Think about your longest-lasting friendship: What has kept it going? Why do some friends drift apart? Is it okay to let some friendships grow cold? Why or why not? Read aloud John 15:9-17. What's important for a strong friendship? Do you need to reconnect or reconcile with anyone? Explain.

